

MATCHLINE SEE SHEET 8 OF 12

MATCHLINE SEE SHEET 7 OF 12

# PENNOCK PRESERVE PUD, PHASE 1

BEING A REPLAT OF A PORTION OF "THE PRADO PUD", RECORDED IN PLAT BOOK 16 AT PAGE 70, PUBLIC RECORDS OF MARTIN COUNTY, FLORIDA, TOGETHER WITH OTHER LANDS, ALL LYING IN SECTION 28, TOWNSHIP 40 SOUTH, RANGE 42 EAST MARTIN COUNTY, FLORIDA SHEET 9 OF 12

PARCEL 3  
67.237 ACRES  
(TOTAL AREA WEST OF SE ISLAND WAY)

TRACT "W-2"  
(WETLAND PRESERVE)  
43.971 ACRES

SOUTH FLORIDA WATER MANAGEMENT DISTRICT  
CONSERVATION EASEMENT  
O.R.B. 2792, PG. 1348  
58.51 ACRES

TRACT "UP-8"  
(UPLAND PRESERVE)  
7.630 ACRES

TRACT "UP-1"  
(UPLAND PRESERVE)  
13.091 ACRES

TRACT "UP-1"  
(UPLAND PRESERVE)  
13.091 AC.

10' O.S.T.-1  
(OPEN SPACE)  
0.243 ACRE

10' P.E.E.  
O.R.B. 1935  
PG. 2793

15' P.E.E.  
O.R.B. 1935  
PG. 2793

10' P.E.E.  
O.R.B. 1935  
PG. 2793

15' P.E.E.  
O.R.B. 1935  
PG. 2793

10' P.E.E.  
O.R.B. 1935  
PG. 2793

10' P.E.E.  
O.R.B. 1935  
PG. 2793

10' P.E.E.  
O.R.B. 1935  
PG. 2793

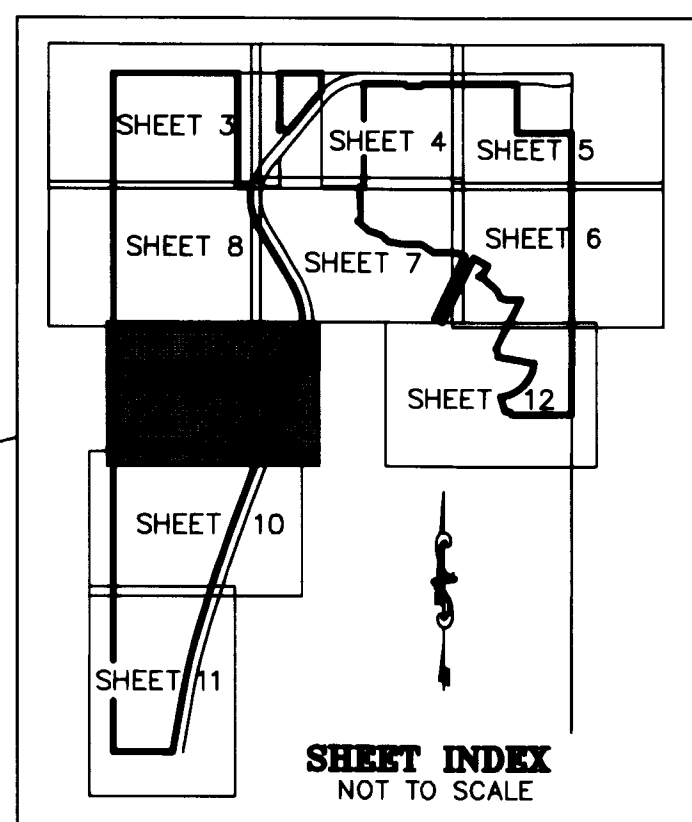
10' P.E.E.  
O.R.B. 1935  
PG. 2793

10' P.E.E.  
O.R.B. 1935  
PG. 2793

10' P.E.E.  
O.R.B. 1935  
PG. 2793

10' P.E.E.  
O.R.B. 1935  
PG. 2793

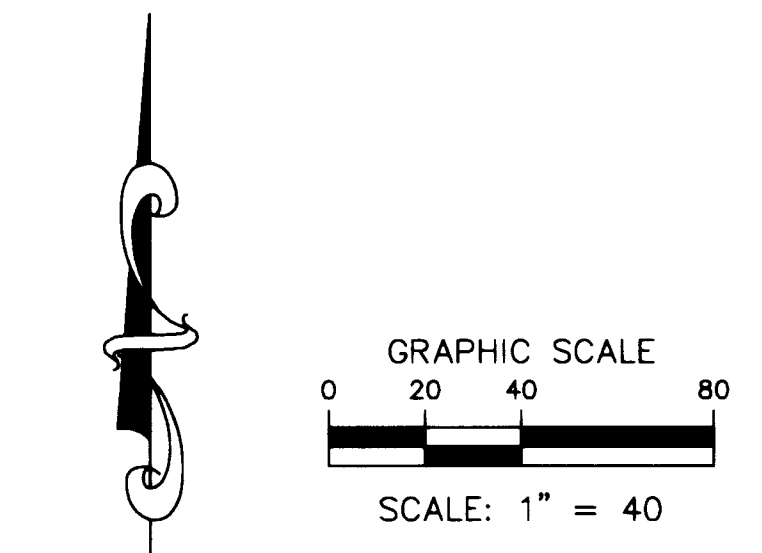
10' P.E.E.  
O.R.B. 1935  
PG. 2793



- LEGEND:**
- AC. = ACRE
  - BB = BASIS OF BEARINGS
  - (C) = CALCULATED DATA
  - CL = CENTERLINE
  - CL = CENTERLINE
  - CB = CHORD BEARING
  - CD = CHORD DISTANCE
  - Δ = DELTA ANGLE
  - (D) = DEED INFORMATION
  - D.E. = DRAINAGE EASEMENT
  - ESMT. = EASEMENT
  - FND. = FOUND
  - I.E.E. = INGRESS EGRESS EASEMENT
  - IRC = IRON ROD AND CAP
  - L = ARC LENGTH
  - LB. = LICENSED BUSINESS
  - Δ = DEED INFORMATION
  - (D) = DEED INFORMATION
  - D.E. = DRAINAGE EASEMENT
  - ESMT. = EASEMENT
  - FND. = FOUND
  - I.E.E. = INGRESS EGRESS EASEMENT
  - IRC = IRON ROD AND CAP
  - L = ARC LENGTH
  - LB. = LICENSED BUSINESS
  - L.M.E. = LAKE MAINTENANCE EASEMENT
  - (M) = MEASURED DATA
  - (NR) = NON RADIAL LINE
  - N.T.S. = NOT TO SCALE
  - O.R.B. = OFFICIAL RECORDS BOOK
  - O.S.T. = OPEN SPACE TRACT
  - P.O.B. = POINT OF BEGINNING
  - P.O.C. = POINT OF COMMENCEMENT
  - P.B. = PLAT BOOK
  - (P) = PLAT DATA
  - P.C. = POINT OF CURVATURE
  - PG. = PAGE
  - P.C.C. = POINT OF COMPOUND CURVATURE
  - P.R.C. = POINT OF REVERSE CURVATURE
  - PRM = PERMANENT REFERENCE MONUMENT
  - PCP = PERMANENT CONTROL POINT
  - P.T. = POINT OF TANGENCY
  - P.E.E. = PERMANENT EMBANKMENT EASEMENT
  - R = RADIUS
  - R/W = RIGHT-OF-WAY
  - (R) = RADIAL LINE
  - SEC. = SECTION
  - U.E. = UTILITY EASEMENT
  - 1/4 SECTION CORNER = 1/4 SECTION CORNER
  - SECTION CORNER = SECTION CORNER
  - FOUND CONC. MON. PRM L.B. 7344 (AS NOTED) = FOUND CONC. MON. PRM L.B. 7344 (AS NOTED)
  - FOUND IRC PRM L.B. 4286 (AS NOTED) = FOUND IRC PRM L.B. 4286 (AS NOTED)
  - SET CONC. MON. PRM L.B. 3591 = SET CONC. MON. PRM L.B. 3591
  - 5/8" IR/C, LB 3591 = 5/8" IR/C, LB 3591
  - PCP, NAIL/DISK, LB 3591 = PCP, NAIL/DISK, LB 3591

800.00'  
800.00'  
UNPLATED  
S000'01.33" W 39556.22'  
WEST LINE OF THE EAST HALF OF SECTION 28

THIS INSTRUMENT PREPARED BY  
DAVID P. LINDLEY  
OF  
**CAULFIELD and WHEELER, INC.**  
SURVEYORS - ENGINEERS - PLANNERS  
7900 GLADES ROAD, SUITE 100  
BOCA RATON, FLORIDA 33434 - (561)392-1991  
CERTIFICATE OF AUTHORIZATION NO. LB3591



MATCHLINE SEE SHEET 10 OF 12